

Alice Lam, MPA

Director

Manatt Health Strategies

 @aliceonthelam

Sustaining a Focus on Social and Emotional Health in Early Childhood: A Case for Leveraging Medicaid and CHIP

Acknowledgments



Einhorn Family
Charitable Trust

the David &
Lucile Packard
FOUNDATION



**Anonymous
Donor**

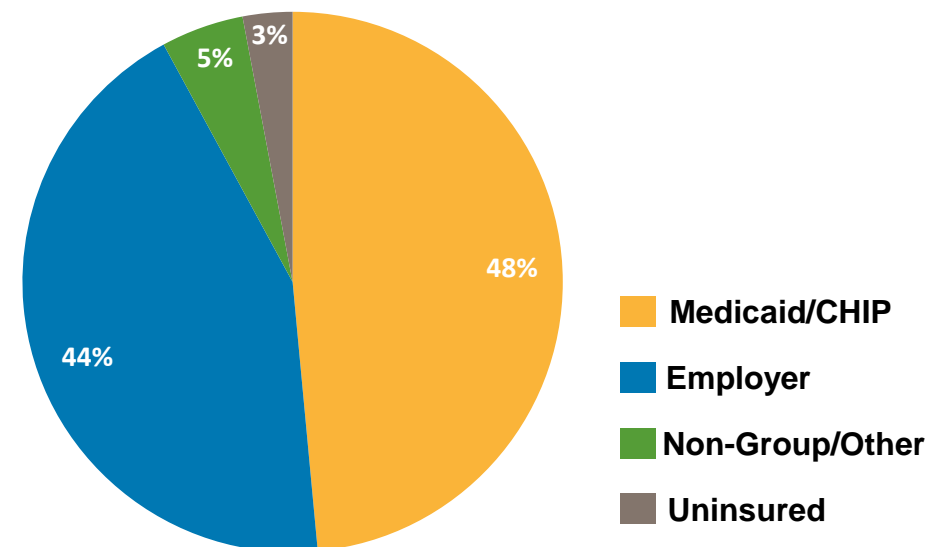
Medicaid and CHIP Can Drive the Course of Pediatric Care Delivery

Medicaid and CHIP can strongly influence how pediatric care is delivered by sharpening the focus on promoting social and emotional development.

Medicaid and CHIP:

- **Broad reach:** Nearly half of children birth to 3 are covered
- **Consistent touch-point:** A clear majority of children attend well-child visits
- **Trusted source:** Parents rely on their child's pediatric provider for guidance and reassurance on health and development
- **Benefits designed** with children's health and developmental needs in mind
- **Built-in flexibility** to refine how care is delivered

Sources of Health Coverage for Young Children



Source: [Urban Institute. Health Insurance Coverage Among Children Ages 3 and Younger and Their Parents in 2016. January 2018.](#)

A Child's Social and Emotional Development is Linked to Family Well-Being

Parents' health, as well as economic and social factors affecting the family, are central to the child's social and emotional development.

Selected family risk factors for low-income children

Parents may be uninsured:

- 12% of parents with a child under age 3 did not have health insurance in 2016
- Parents are 4X more likely to be uninsured than their children – 14 states that have not expanded Medicaid pose greatest challenges, especially for families of color

Parental health status and family circumstances:

- Maternal depression
- Interpersonal violence

Economic challenges:

- Factors such as food insecurity, housing instability, affordable transportation

Source: [Urban Institute. Health Insurance Coverage Among Children Ages 3 and Younger and Their Parents in 2016. January 2018.](#); [Zero to Three. High Baby & Toddler Poverty Rate a Wake-Up Call for America. Leading Early Childhood Development Expert Says. September 12, 2018.](#); [Center for Children and Families. Healthy Parents and Caregivers are Essential to Children's Healthy Development. December 2016.](#); [Center for Children and Families. Health Coverage for Parents and Caregivers Help Children. March 2017.](#) [Center on Budget and Policy Priorities. Taking Away Medicaid for Not Meeting Work Requirements Harms Children. March 2019.](#)

Why Now?

State interest is growing in the connection between early childhood and health.

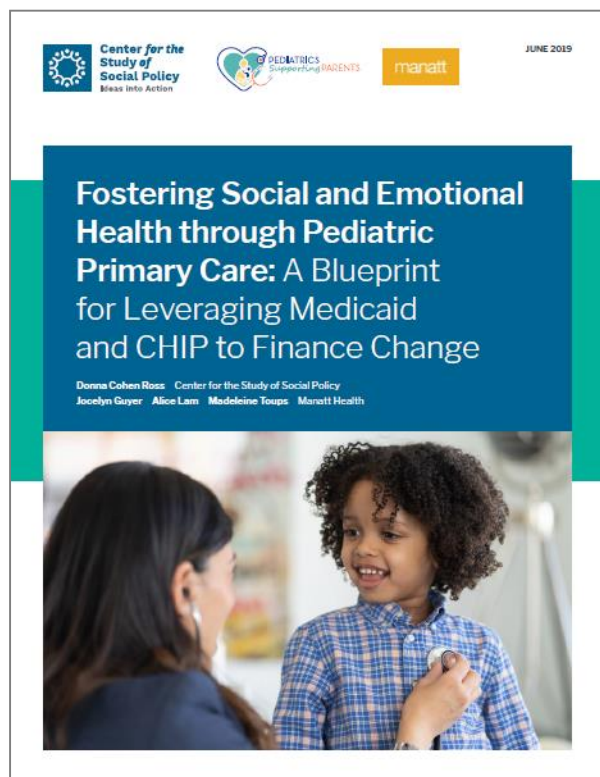
Selected Drivers of States' Interest

1. Intensifying appreciation of early brain development
2. Growing focus on social determinants of health (SDOH)
3. Next generation efforts on value based payments (VBP)
4. Opioid and broader substance use epidemic
5. Mental health crisis and rising suicide rates



A Resource for Medicaid and CHIP Strategies and Tools

The Blueprint presents a set of actionable strategies for using Medicaid and CHIP to finance promotion of social and emotional development in pediatric primary care.



Five core strategies and tools, including statutory and regulatory authority



Action steps to implement strategies



Tools for implementation (i.e., federal guidance, contract language, sample State Plan Amendment language)



State examples of current policies and activities across the country

Blueprint Strategies



Cover and support a full range of screening, assessment, and treatment services



Leverage quality and performance improvement



Establish payment models and incentives



Facilitate investment in team-based care



Leverage a CHIP Health Services Initiative (HSI)