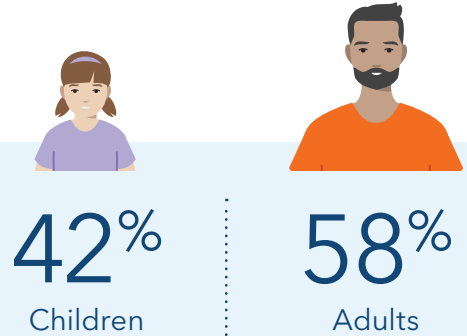


At A Glance:

Kaiser Permanente's Participation in HealthChoice

Enrollment*

More than 103,000 Kaiser Permanente members are enrolled in HealthChoice, Maryland's Medicaid Managed Care Program.

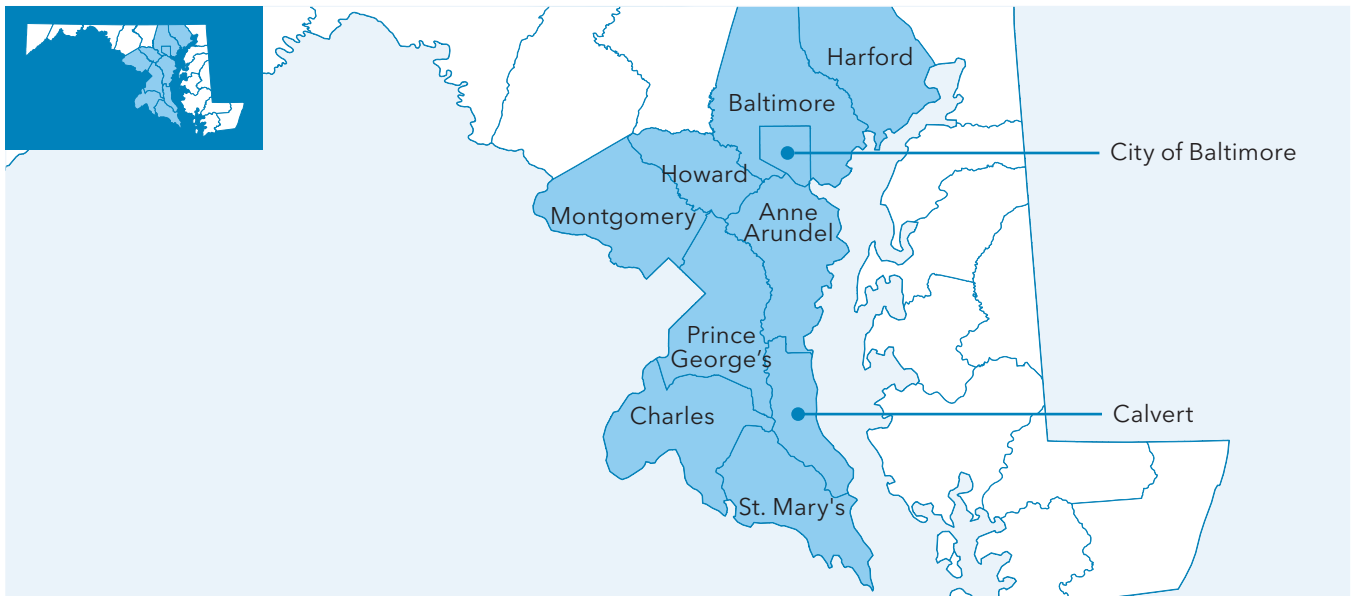


*Data is current as of December 2024.

Participation

Kaiser Permanente currently participates in HealthChoice in 9 counties in Maryland and in the city of Baltimore.

Kaiser Permanente contracts directly with the state to provide care and coverage on a capitated basis (meaning a fixed payment per member, per month).



State Program Spotlight

Kaiser Permanente provides several Medicaid benefits that help address social needs and improve outcomes for our members, especially those with the most complex needs. Key benefits include:

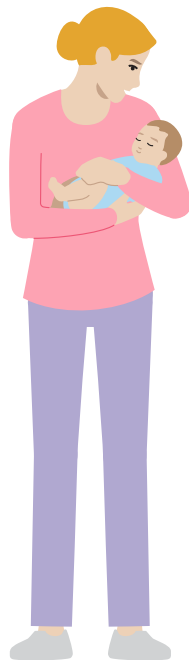
- Doula Services
- Maternal Opioid Misuse (MOM) Program
- [CenteringPregnancy](#)
- Home visiting services for high risk prenatal and postpartum members
- [HealthySteps](#) program for children aged 0-3
- Diabetes Prevention Program
- Continuous eligibility for newborns born to Medicaid-enrolled moms
- Prescription drug monitoring

Quality

The National Committee for Quality Assurance (NCQA®) has awarded Kaiser Permanente's HealthChoice plan 4.5 out of 5 stars for our performance on measures related to consumer satisfaction, prevention, and treatment.

Kaiser Permanente HealthChoice performs in the NCQA® 90th percentile or above** for the following measures:

- Childhood Immunization Status - Combo 3
- Immunization for Adolescents - Combo 2
- Cervical Cancer Screening
- Colorectal Cancer Screening
- Asthma Medication Ratio
- Controlling High Blood Pressure
- Blood Pressure Control for Patients with Diabetes
- Eye Exam for Patients with Diabetes
- Timeliness of Prenatal Care
- Postpartum Care



These metrics are based on NCQA's Healthcare Effectiveness Data and Information Set (HEDIS), a tool used by more than 90% of America's health plans to measure performance on important dimensions of care and service.

**Measures reflect Kaiser Permanente HealthChoice performance among all Medicaid plans nationally in 2023.

Social Health

Many Kaiser Permanente members struggle with inadequate housing, hunger, financial stress, and other circumstances that create barriers to good health, particularly members enrolled in Medicaid. Kaiser Permanente works proactively to identify our members with these and other adverse social needs and to connect them to community-based programs and government assistance programs that can support their well-being.

Safety-Net Partnerships

Kaiser Permanente is committed to building partnerships with the health care "safety net" – institutions that play a critical role in delivering health care for the uninsured and underserved. Through grants, training, and technical assistance, we work with safety-net hospitals and health centers to help these institutions reach those who are low-income, uninsured, or under-resourced in our communities, and move the needle in eliminating health disparities. We do this by investing in quality improvement and other support efforts that aim to transform care and improve health access for those most in need.

Social Health Screening and Identification

Kaiser Permanente uses standard social health screening questions and data analytics to identify members vulnerable to food-insecurity, homelessness, financial strain, and other adverse social factors. By expanding social health screenings across an increasing number of clinical settings and member services touchpoints, with a focus on high-risk populations, Kaiser Permanente is steadily increasing the number of members screened for social needs. We screened nearly 3 million members for social needs in 2024, including 32% of our Medicaid members. These screenings and other data sources helped us identify over 1 million members with social needs and connect nearly 500,000 members to public benefits and community-based programs that support overall health.

The Kaiser Permanente Community Support Hub™

The Kaiser Permanente Community Support Hub™ is dedicated to helping people meet their basic needs. The hub operates proactively, using text, email, and phone calls to encourage members to complete social health screenings and to offer help finding and enrolling in community-based resources and government assistance programs that support overall health. The Hub also provides on-demand services, including [an online directory of resources](#) that anyone can use to search for local programs that help with housing, food, paying utility bills, and more.

Medical Legal Partnerships

Working with local legal aid organizations in our communities, our care teams help patients facing housing-insecurity receive legal help at no cost. These medical-legal partnership programs build the capacity of the legal services sector and increase access to legal services to prevent people and families from losing their homes. This program targets low-income members and patients with housing related legal needs. In 2024, [legal consultation was provided to over 1,000 patients across our national footprint.](#)

